



**4000 Series
Snow Blower
Operator's and Parts Manual**

REIST Industries Inc.
100 Union Street
Elmira, Ontario, Canada
N3B 2Z2

Phone: 519-669-1501
Fax: 519-669-3021
Toll Free: 1-877-467-3478
www.reistindustries.com

Revised: October 2010
Effective Serial Number D10122 and up

Contents

INTRODUCTION.....	2
PRODUCT CONFIGURATION.....	3
GENERAL SAFETY PRECAUTIONS	4
OPERATION AND TRANSPORTATION ON PUBLIC ROADS AND AREAS.....	5
SAFETY SIGN LOCATION	6
SETUP INSTRUCTIONS.....	8
PTO DRIVE	9
SKID SHOES	9
MAINTENANCE	10
USE OF SNOW BLOWER	11
OPERATION	11
OPERATIONAL HINTS.....	11
SIDE DISCHARGE FEATURE.....	12
PARTS.....	13
Main Blower Assembly: Sheet 1	13
Main Blower Assembly: Sheet 2	14
Main Blower Assembly: Sheet 3	15
Main Blower Assembly: Part Numbers.....	16
Single Stage Deflector – Option.....	17
Two Stage Deflector – Option	18
Telescopic Chute - Option.....	19
Bolt-on Bank Cutter - Option	20
Hydraulic Bank Cutter – Option.....	21
WARRANTY INFORMATION	22

Record your product information for future reference:

Model Number: _____

Serial Number: _____

In Service Date: _____

Sold By: _____

INTRODUCTION

Thank you for choosing a REIST 4000 Series Snow Blower.

We feel confident that this equipment will meet your expectations in workmanship, reliability and performance when used as designed. This manual is to assist you with the safe operation of the REIST 4000 Series Snow Blowers. It also has a parts list to help you when replacement parts are required. Any person who will be assembling, attaching, maintaining, or operating this product and the prime mover to which it is attached, are required to read and completely understand the information and instructions contained in this manual and that of the prime mover. Always obtain further assistance by contacting the dealer from which this product was purchased or by contacting REIST Industries at the telephone number or address below. Keep this manual available for reference whenever this product is being handled or used and we recommend that it is reviewed periodically and before seasonal use. Provide this manual to any new owners and/or operators and ensure they fully understand the safe operation of this equipment before it is placed in service.

Replacement copies of this manual are available for downloading at:
www.reistindustries.com

Innovation Working For You

REIST Industries Inc.

100 Union Street
Elmira, Ontario, Canada
N3B 2Z2

Phone: 519-669-1501
Fax: 519-669-3021
Toll Free: 1-877-467-3478

REIST Industries USA Inc.

844 E. Greenwood Street
Abbeville, South Carolina
USA 29620

Phone: 1-864-366-0172
Toll Free: 1-888-369-1444

The illustrations and information contained within this manual were current at the time of publication. Under our policy of continuous improvement, we reserve the right to change specifications and designs without prior notice. The illustrations do not necessarily show the standard version of product offered by REIST Industries.

PRODUCT CONFIGURATION

To ensure that the right size of Snow Blower is matched to the prime mover, REIST Industries Snow Blowers are sized as follows:

4000 Series Snow Blower

- Model 4108 - 108" wide, 540 or 1000 rpm PTO Drive, 2950 lb (1 340 kg) weight, 80 - 120 input hp, using a CAT II Hitch mount
- Model 4120 - 120" wide, 540 or 1000 rpm PTO Drive, 3100 lb (1 400 kg) weight 80 -120 input hp, using a CAT II Hitch mount

Both models are shipped with a reducing gear box installed so that they may be used on prime movers equipped with 1000 rpm PTO drives. Removing the gear box allows operation with tractors that have 540 rpm PTO drive.



WARNING!

Exceeding the recommended specifications can result in damage to the equipment and will void all REIST Industries warranties.

Each model comes standard with a hydraulic hood turner and can be equipped with several options, such as:

- Hydraulic single stage Deflector Kit
- Two stage Deflector kit
- Telescopic hood assembly
- Various bank and drift cutters
- Second auger with a 12 inch diameter
- Side housing discharge

The following references are used throughout this Operator's and Parts Manual:

Front or Rear Mounted	Orientation that is determined in relation to the operator of the equipment when seated in the normal operating position of the prime mover
Right, Left, Front, Rear	Orientation that is determined in relation to the operator of the equipment when seated in the normal operating position of the prime mover.
Attachment, Implement	Refers to the Snow Blower whether attached or separate from the prime mover
Prime Mover	The engine-driven machine to which this product is attached
Equipment	Refers to the Implement and or prime mover whether separate or connected
WARNING, DANGER, IMPORTANT	A notice that relates to the safe and efficient operation of the Snow Blower or prime mover. Read and understand the reference before attaching or operating the Snow Blower or the prime mover.

GENERAL SAFETY PRECAUTIONS

Careful operation is the best assurance against accidents. It is the owner's responsibility to make sure that all operators read and understand this manual and follow the recommendations, cautions and warnings before connecting to a prime mover and operating the equipment. The REIST Snow Blower was designed for use in snow clearing / removal applications only. Do not use with any other materials.

Familiarize yourself with all controls and know how to quickly stop the equipment and all rotating parts in the case of an emergency.

Never let an untrained person or a child operate equipment.



WARNING!

DO NOT MODIFY THE SNOW BLOWER OR PRIME MOVER

Modifications may weaken the integrity of the Snow Blower and may impair the operation, safety, and performance of the product. When making repairs, only qualified technicians using the manufacturer's genuine parts, following authorized instructions, shall attempt the repair. Never modify any ROPS (Roll Over Protection Structure) or FOPS (Falling Object Protective Structure) equipment or other safety device or remove guarding. Any modifications must be sanctioned in writing by an authorized representative of the manufacturer.



WARNING!

MAINTAIN AND REPAIR EQUIPMENT SAFELY

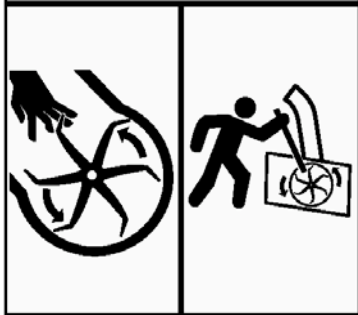
- Do not wear loose clothing, or any accessories that can catch in moving parts
- If you have long hair, cover or secure it so that it does not become entangled in the equipment
- Work on a level surface in a well-lit area.
- Always lower raised equipment to the ground or securely support it to prevent unintentional movement
- Remove and retain the prime mover's ignition key
- Use the correct tool for the job at hand. Make sure they are in good condition for the task required
- Wear the protective equipment specified by the tool manufacturer
- Use care when working on hydraulic systems and understand how to check for and release trapped hydraulic pressure



WARNING!

STAY CLEAR OF ROTATING OBJECTS

Keep hands, feet and clothing away from power driven rotating parts.



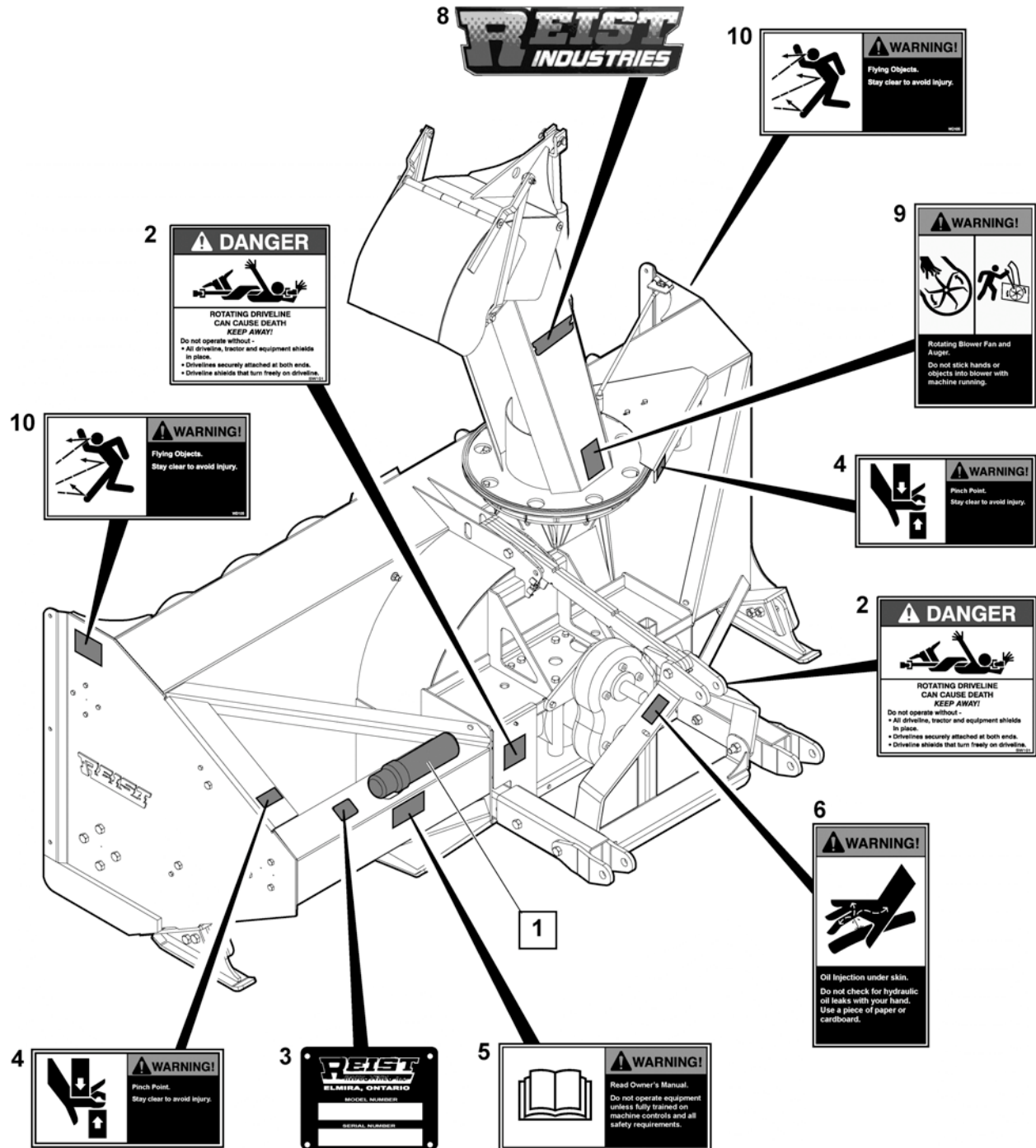
Never use your hands to clear a clogged auger. Never allow anyone to reach into the chute, force objects (i.e. bars, poles, etc.) down the chute, or otherwise come in contact with a rotating fan or with a non-rotating clogged fan or auger. Never allow anyone to reach into the chain drive housing. The auger can crush and/or dismember. Keep everyone clear of the auger until the prime mover engine is off and the hydraulic pressure has been relieved.

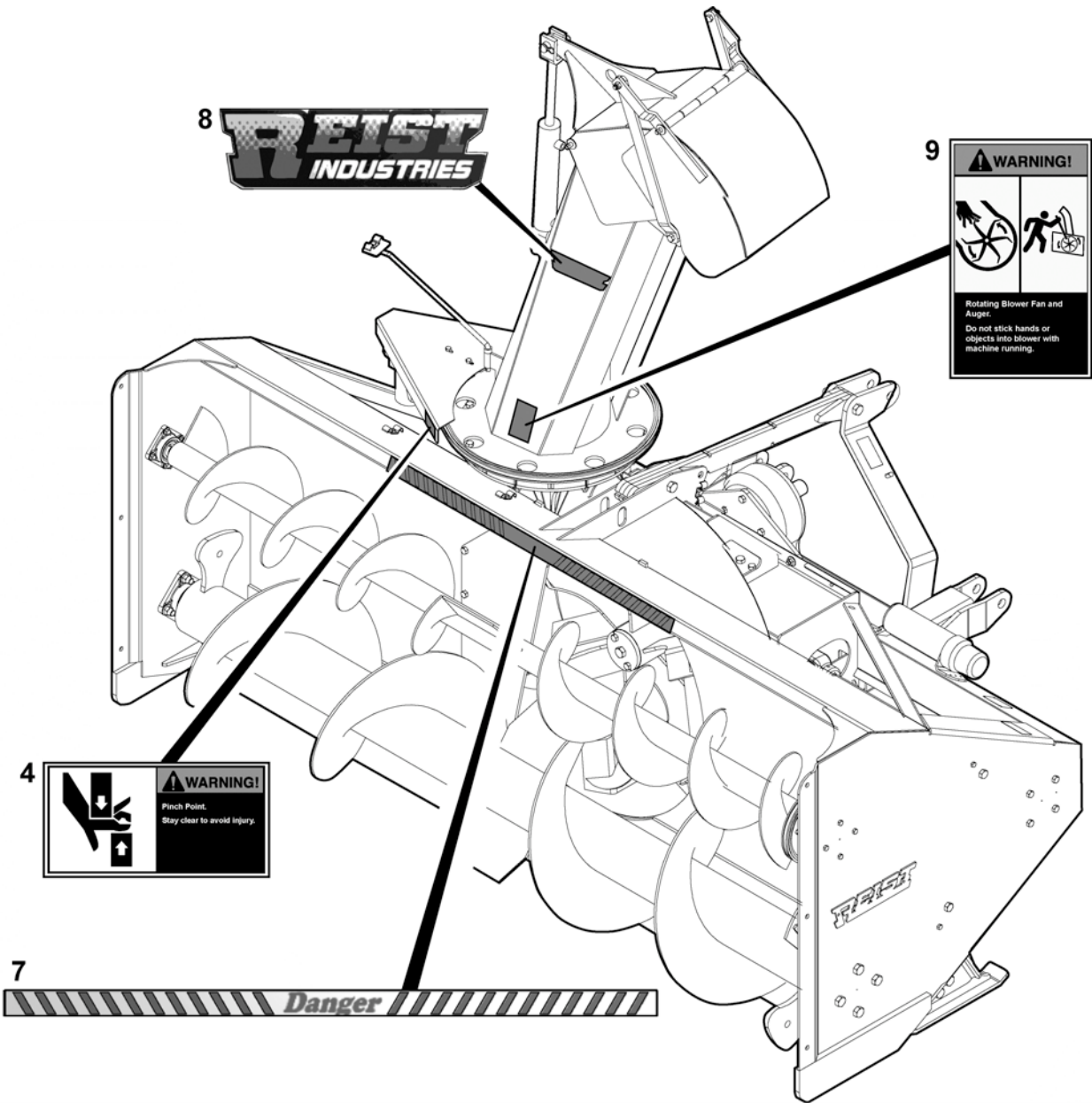
OPERATION AND TRANSPORTATION ON PUBLIC ROADS AND AREAS

Always adhere to the local laws and regulations concerning traveling or operating on public roadways and areas. Clean all lights, reflectors and mirrors ensuring that all lighting is in working order before moving. Know the area that the discharged snow is to be placed is free from hazards and that the discharged snow will not create a hazard, i.e. reduce visibility for vehicular traffic or pedestrians. Use caution when directing the discharge as hazardous objects (stones, ice, etc.) may inadvertently be discharged along with the snow. Do not engage or disengage the PTO while roading. Always be alert while transporting or operating the equipment. Select a safe ground speed when transporting from one area to another. When operating or driving on roadways, travel in such a way that faster moving vehicles may pass you safely.

SAFETY SIGN LOCATION

Contact REIST Industries if replacement safety signs are required.





DECAL LOCATION PARTS LIST

Item	Qty	Part Number	Description
1	1	67.222.000	Manual Holder
2	2	DD100	Drive Line Decal
3	1	Serial	Serial Number Plate
4	3	WD104	Pinch Point Decal
5	1	WD103	Read Manual Decal
6	1	WD102	High Pressure Decal
7	1	DD108	Danger Strip Decal
8	2	RD108	REIST Decal
9	2	WD101	Rotating Fan Decal
10	2	WD105	Flying Object Decal

SETUP INSTRUCTIONS

Improper installation, operation, or maintenance of this equipment could result in serious injury or death. FOLLOW ALL SAFETY INSTRUCTIONS IN THIS MANUAL AND THE PRIME MOVER'S MANUAL(S).

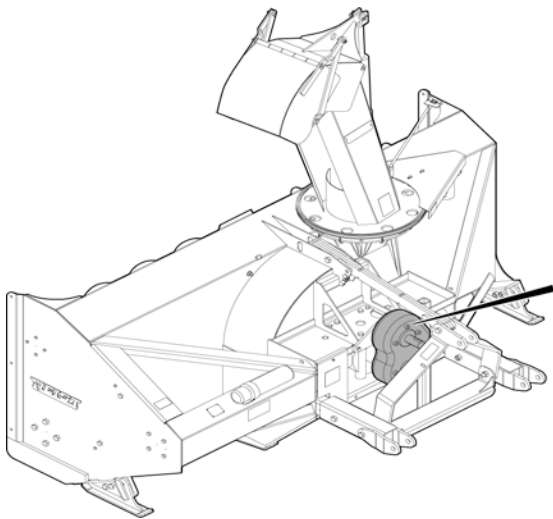
Refer to the operator's manual(s) for your prime mover and follow the mounting instructions contained therein.

Once attached, and it is safe to do so, carefully raise the Snow Blower and cycle the tilt cylinders to check clearances and to verify that all mounting procedures have been successfully completed.

The REIST 4000 Series Snow Blower is shipped with a PTO speed reducing gear box installed so that they may be used on 1000 rpm PTO drives. Removing the gear box allows operation with tractors that have 540 rpm PTO drive.

Know the output speed of the Power Take Off (PTO). Note a 1000 rpm PTO drive is available in two sizes.

- A 540 rpm stub shaft has 6 splines or teeth and is 1 $\frac{3}{8}$ inch in diameter
- A 1000 rpm stub shaft has 21 splines or teeth and is 1 $\frac{3}{8}$ inch in diameter
- A 1000 rpm stub shaft has 20 splines or teeth and is 1 $\frac{3}{4}$ inch in diameter



Connect the Snow Blower to a 1000 rpm PTO if the speed reducer gear box is mounted on the Snow Blower. Connect the Snow Blower only to a 540 rpm PTO only if the speed reducing gear box has been removed. Do not connect the Snow Blower to a 1000 rpm PTO if the speed reducing gear box has been removed.



WARNING!

STAY CLEAR OF ROTATING OBJECTS

Keep hands, feet and clothing away from power driven rotating parts.

PTO DRIVE

The Snow Blower hitch is a category II. Use the proper pin sizes when attaching the Snow Blower to the prime mover. Do not attach the PTO driveline at this time.

- Always ensure that the PTO shaft is proper length! Make sure PTO shaft doesn't bottom out or come apart throughout the range of movement for the 3 PTH. The hitch can be extended to 3 different positions to accommodate different installations
 - a. Connect the Snow Blower to the lower arms of the 3 point hitch. Be sure the 3 point hitch is set in the non-sway position (See prime mover manual for details)
 - b. Measure the distance from the end of the prime mover PTO shaft to the end of the gear box shaft on the Snow Blower
 - c. Lay driveline on flat surface and measure the distance from one end to the other in the most collapsed position
 - d. If the required driveline length is greater than length of the shaft, move the mounting locations for the Snow Blower until the correct position is achieved
 - e. If distance from the end of the prime mover PTO shaft to the end of the gear box shaft on the Snow Blower is greater than 9" more than the overall length of the collapsed driveline, the driveline may be too short. Most class 4 and 5 drivelines have a 9" stroke with minimum of 5" overlap. Reposition the Snow Blower mounts or exchange the driveline
 - f. Once the driveline is installed, connect the upper link
 - g. When it is safe to do so, slowly lift the Snow Blower thru the complete arc of the 3 point mount. Make sure driveline does not bottom out at anytime throughout the arc. Make sure the driveline shields are in place and do not separate

SKID SHOES

Following attachment to the prime mover, ensure that the Snow Blower's cutting edge is parallel to the ground when skid shoes are touching the ground. If not, adjust the skid shoes accordingly.

The height of the Snow Blower above the ground is set by adjusting the skid shoes. The working clearance to the ground is determined by surface beneath the snow where your Snow Blower is being operated.

- If the surface is soft / uneven or contains gravel, stone or other material that might be easily picked up and thrown by the Snow Blower, then a lower position should be used, thereby increasing the working clearance between the surface and the Snow Blower

- If the surface is hard and smooth, like concrete or asphalt, the skid shoe placement should be in the highest position to minimize residual snow following each pass

Changing the position of the skid shoes should be performed as follows:

Refer to the General Safety Precautions, page 4 of this manual before performing these steps.

1. With the Snow Blower properly installed, position the prime mover on a level surface, the park brake should be set and the wheels chocked to prevent movement
2. Lower the Snow Blower's cutting edge onto wood blocking that is adequate to safely hold the Snow Blower the right distance from the ground based upon your working conditions
3. Shut off your prime mover's engine, remove the ignition key, wait for all moving parts to come to a stop, and relieve residual pressure in the hydraulic lines
4. Adjust the skid shoes so they contact the ground evenly on both sides
5. Adjust the top link (3 point hitch versions only) as required so that the skid shoes have full contact with the surface and the cutting edge is parallel to the ground

MAINTENANCE

Refer to the General Safety Precautions, page 4 of this manual before performing any maintenance.

1. Always ensure the Snow Blower is properly installed, the prime mover is positioned on a level surface with the park brake set and the Snow Blower positioned on the ground
 2. Shut-off the engine and remove and retain the ignition key
 3. Chock the wheels to prevent movement and release residual hydraulic pressure
- Grease bearings every 100 hrs with EP2. **Do Not Over Grease**
 - Grease PTO crosses daily (or 8 hours of operation) with EP2
 - Check the chain tension adjustment and ensure that the chain does not have any slack. If the tensioner needs to be adjusted, slightly loosen bolt on outside of frame and with a pipe wrench, turn the casting until the arm has 10 to 15 degrees of total travel between being fully engaged with the chain and its clear position
 - Check oil in gearbox at the level check plug every 500 hrs. Use 80W90 gear oil
 - At the beginning of each season, ensure that all fasteners are properly torqued, all safety guards are in place and that operator's manual is reviewed and understood
 - At the end of season, perform all maintenance activities greasing shafts and replacing gear box oil, cap and protect exposed hose ends (if so equipped) and the PTO drive splines. Always check for missing or damaged parts and repair as required

USE OF SNOW BLOWER

OPERATION

Starting the Snow Blower:

- Be sure the area is clear of all bystanders
- Refer to the prime mover starting instructions
- Run the engine at low idle and slowly engage the PTO control
- Slowly increase the prime mover engine RPM to achieve the rated PTO speed. Never exceed rated speed

Stopping Machine:

- Slowly decrease engine speed to low idle
- Wait until the PTO drive and Snow Blower have slowed to low engine idle speed before disengaging PTO drive
- Shut down the prime mover in accordance to instructions and wait for moving parts to stop and relieve residual hydraulic pressure before approaching the Snow Blower

Ground Speed:

Travel speed is governed by the operating conditions including the depth of snow, the density (wetness) and the area being cleared including the surface and slopes. It is the responsibility of the operator to note the condition of the job being done and set the speed to obtain the proper clearing rate to prevent plugging and maintain safe control of machine.

The PTO driveline is equipped with a shear bolt that protects the drive system components from shock loads if the machine strikes an obstruction. See parts section for the appropriate replacement part.

OPERATIONAL HINTS

- Always ease the prime mover slowly into the snow. Do not allow the engine of the prime mover to lug or stall
- In deep or heavy snow, you may have to remove the snow in more than one pass
- Allow the snow to be cleared from the Snow Blower by momentarily stopping the prime mover or slowing the speed of travel
- Remember to disengage the PTO when raising or lowering the Snow Blower
- **DO NOT USE THE SNOW BLOWER TO PUSH SNOW – always engage snow with the Snow Blower operating**

The most effective method of discharging snow is to blow the snow as high as possible downwind, to minimize drifting in the cleared area. The hood deflector will allow you to adjust the height and distance that the snow is thrown. You can reduce the distance and force that the snow is thrown by reducing the tractor's rpm. When operating at low engine rpm's, allow time for the snow to clear from the blower by also reducing the travel speed. Your Snow Blower is equipped with hood rotation which allows the operator to change the direction of the snow being thrown. Always be aware of where you are throwing the snow.

SIDE DISCHARGE FEATURE

Your REIST 4000 Series Snow Blower may be equipped with an optional side discharge feature built into the rotating fan housing. The operator can select to discharge through the top chute or by-pass the chute and discharge directly from the fan housing to either the left or right side. As it requires less horsepower to blow out of the side discharge than through the chute, this REIST innovation will reduce your fuel costs! The Side Discharge feature is an ideal solution in locations where the precise placement of the discharged snow is not a requirement, such as in country roads and driveways.



WARNING!

READ OPERATOR'S MANUAL BEFORE OPERATING

Do not operate equipment until you are completely trained by a qualified operator in how to use the controls, understand the machine's capabilities, dimensions, and all safety requirements. Refer to your operator's manual for these instructions.

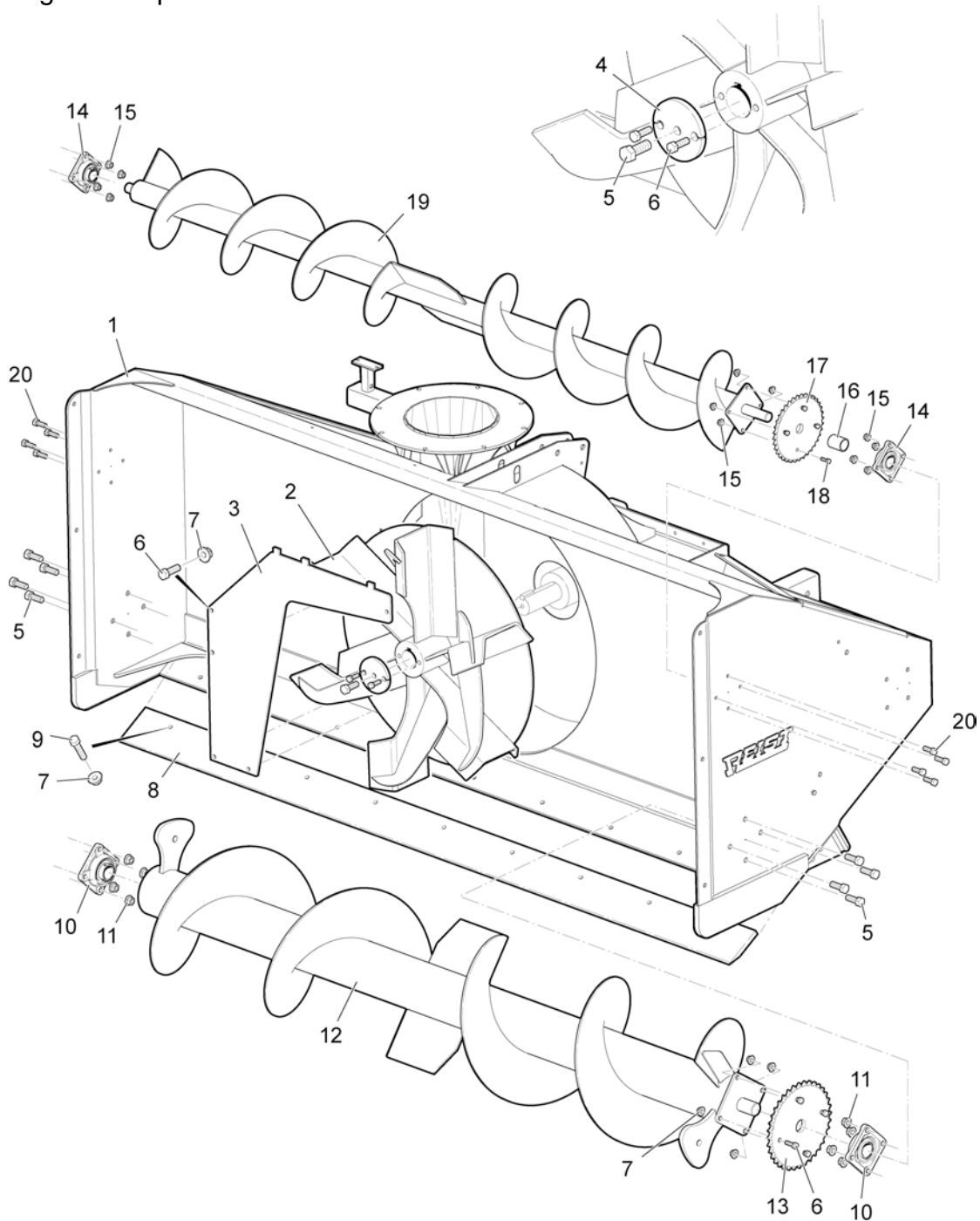
- Do not operate an engine in confined or non-ventilated area
- Do not perform adjustments or repairs with the engine running
- Always lower raised equipment to the ground or securely support it to prevent unintentional movement
- Do not operate on excessive inclines or side slopes – know the limitations of the prime mover – be careful when turning on slopes as a rollover condition may exist
- Never carry passengers
- Keep bystanders away from the machine when in operation
- Know the area that the discharged snow is to be placed is free from hazards and that the discharged snow will not create a hazard
- Use caution when directing the discharge as hazardous objects (stones, ice, etc.) may inadvertently be discharged along with snow
- Know how to quickly stop the equipment and all rotating parts in the case of an emergency
- Stop the prime mover, lower implements and turn off the engine before dismounting
- Refer to the prime mover's Operator's Manual for additional information

PARTS

Note: some items shown are optional and may not be installed on your equipment.

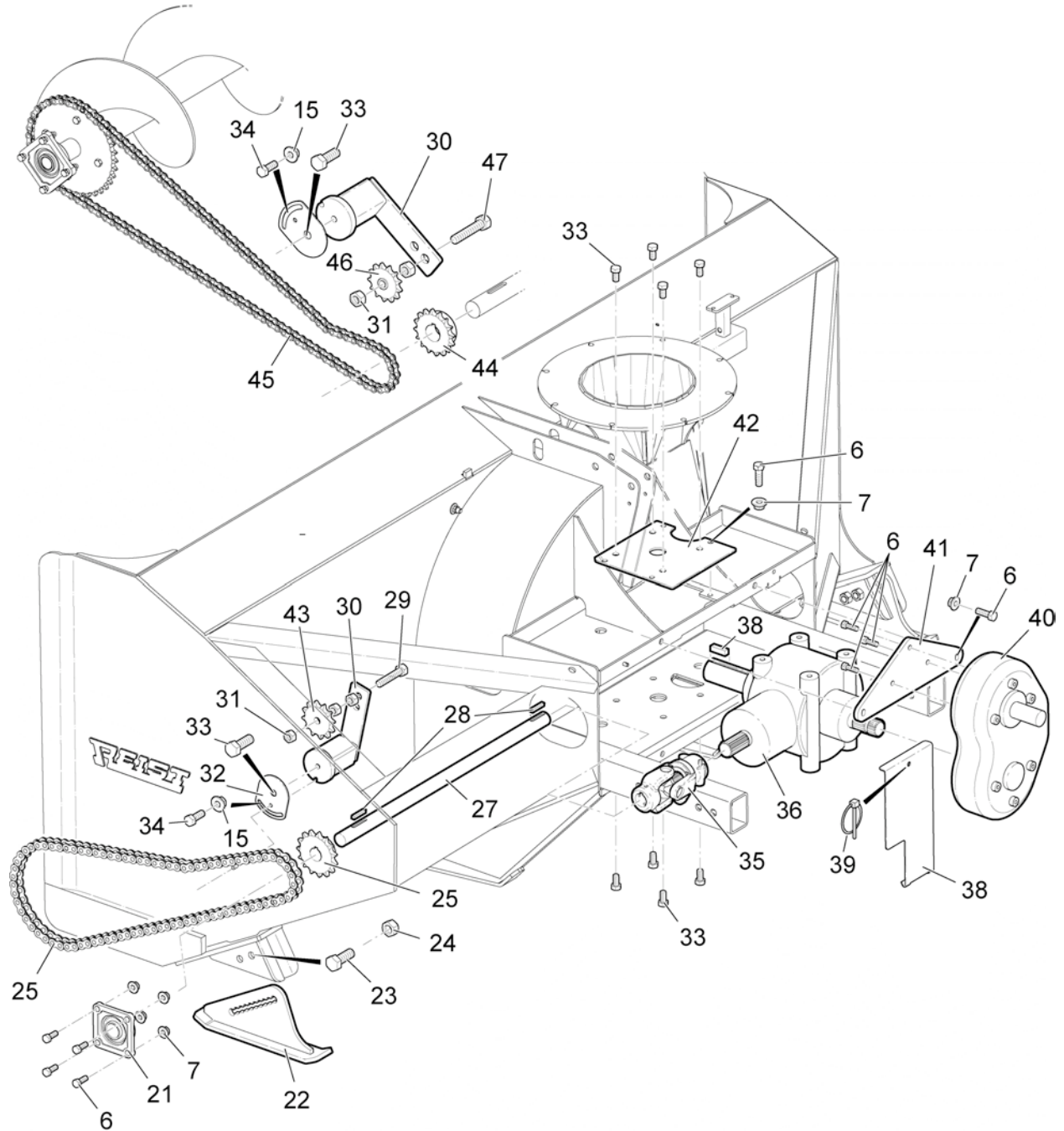
Main Blower Assembly: Sheet 1

See Page 16 for part numbers.



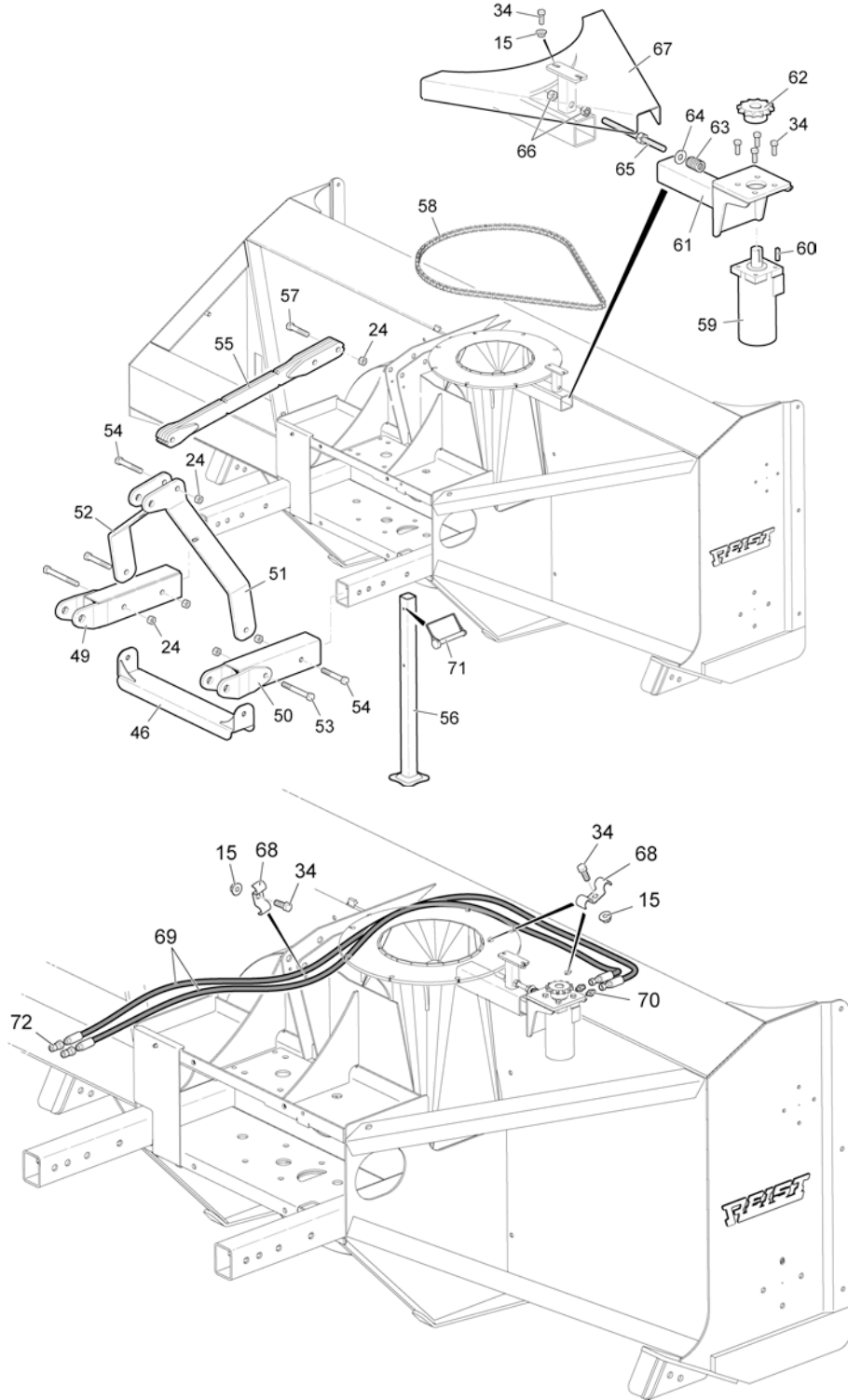
Main Blower Assembly: Sheet 2

See Page 16 for part numbers.



Main Blower Assembly: Sheet 3

See Page 16 for part numbers.



Main Blower Assembly: Part Numbers

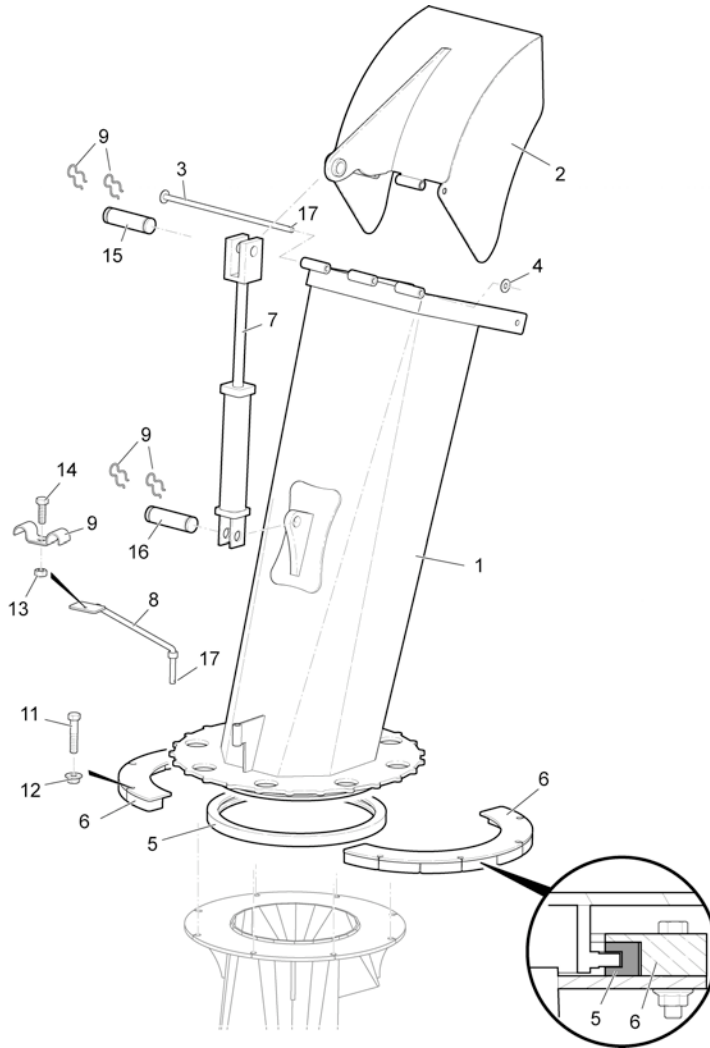
Note: some items shown are optional and may not be installed on your equipment.

Item	QTY	Part Number	Description
1	1	4001 XXX	Blower Weldment
2	1	4000	Fan 36 inch 6 blade
3	1	4019	Shear Blade B
4	1	4032	CAP (c/w item 2)
5	9	582	Hex Bolt
6	24	12112	Hex Bolt
7	28	12FSLN	Flange Nut
8	1	4003 XXX	Cutting Edge
9	9	12*2	Hex Bolt
10	2	UCF209112D1	Bearing
11	8	58FSLN	Flange Nut
12	1	4002	Auger Bottom
13	1	480A36	Sprocket
14	2	UCF206104D1	Bearing
15	12	38FSLN	Flange Nut
16	2	114S	Pipe spacer
17	1	460A36	Sprocket
18	4	38114	Hex Bolt
19	1	4024 XXX	Top Auger
20	8	38112	Hex Bolt
21	1	UCF208108	Bearing
22	2	4013	Skid Shoe Weldment
23	4	34*2	Hex Bolt
24	10	34N	Hex Nut
25	1	80RC	Roller Chain 90 links
26	1	80B15X1-1/2	Sprocket
27	1	4005 XXX	Auger Shaft
28	2	38KS	Key
29	1	326376	Bolt
30	2	SE 38	Torsion Tensioner
31	5	34N	Hex Nuts
32	2	4033	Tightener Plate
33	10	1630M	Hex Bolt
34	12	38*1	Hex Bolt
35	1	T60-260004-016307	Shear Pin Yokes Assembly
36	1	T_301A	Gearbox

Item	QTY	Part Number	Description
37	1	58KS	Key (gearbox to fan)
38	1	4017	Blower Shield
39	1	385501	Linch Pin
40	1	3G-135-902	Reducer
41	1	4021	Reducer Mount Plate
42	1	4020	Gearbox Top Plate
43	1	08012012	Sprocket 80B12 Idler
44	1	60B16X1-1/2	Sprocket
45	1	60RC	Roller Chain 118 links
46	1	20601310	Sprocket 80B13 Idler
47	1	326374	Bolt
48	1	4014	TPH Spanner
49	1	4010	TPH Socket R
50	1	4004	TPH Socket L
51	1	4011	TPH Top Link Plate L
52	1	4012	TPH Top link plate R
53	2	347	Hex Bolt
54	3	345	Hex Bolt
55	1	4022	TPH Top Link
56	1	4015	Stand
57	1	34*4	Hex Bolt
58	1	2060RC	Chain - chute turn 60 links
59	1	101-1016	Motor
60	1	14KS	Key
61	1	4016	Hyd Motor Mount
62	1	60B12x1	sprocket
63	1	MHC-13	Compression Spring
64	1	12FW	Plain Washer
65	1	4023	Chain Tightener Rod
66	2	12N	Hex Nut
67	1	4018	Hyd Motor shield
68	4	C-1038	Hose Clip
69	2	H24504-108-606-134	Hose
70	2	5315*6*10	Hyd Adapter (motor port fitting)
71	1	387113	Pin
72	2	8010-4	1/2 Male Tip

Note: For item 1, 8, 12, and 27, replace XXX with '108' when ordering parts for a 9' foot blower.
Replace with '120' when ordering parts for a 10 foot blower.

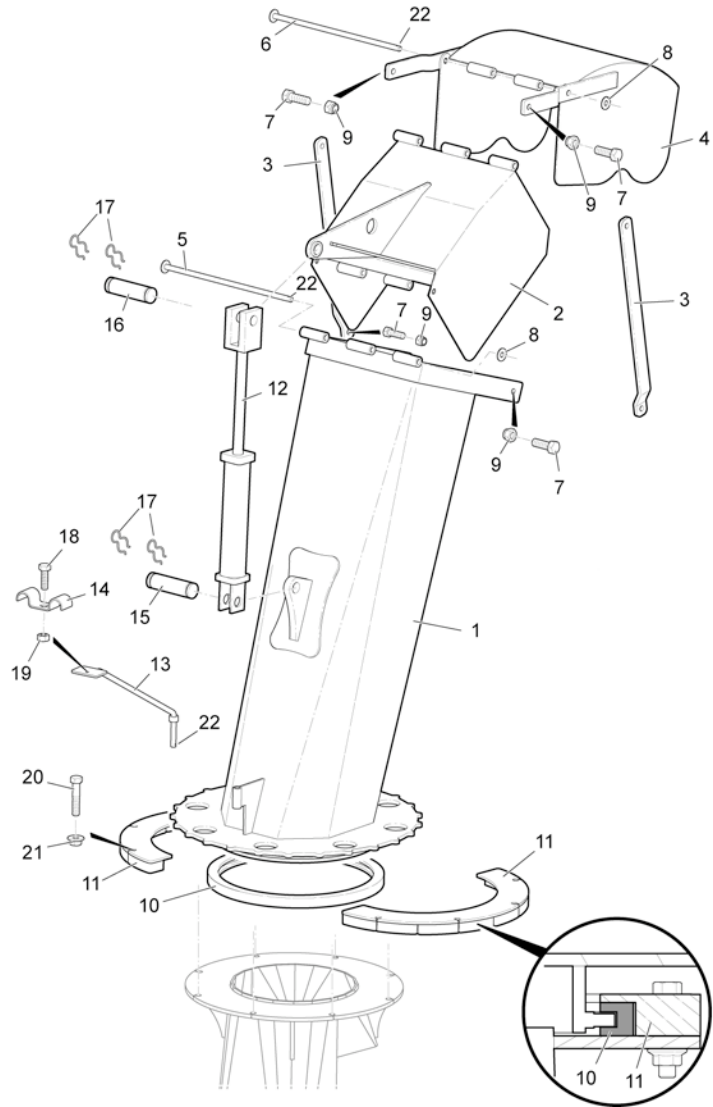
Single Stage Deflector - Option



Item	QTY	Part Number	Description
1	1	SCA	Straight Chute
2	1	SSHD	Deflector
3	1	SCB	Single Deflector Rod
4	1	12FW	Plain Washer
5	1	1x1UHMW54LG	UHMW ring
6	2	SCC	Clamping Ring
7	1	20TL08	2x8 cyl
8	1	SCD	Hose Rod
9	1	C-1038	Hose Clip

Item	QTY	Part Number	Description
10	4	637856	Hair Pin
11	8	12212	Hex Bolt
12	8	12FSLN	Flange Nut
13	1	516N	Hex Nut
14	1	5161	Hex Bolt
15	1	367855	1 inch Cylinder Clevis Pin
16	1	637855	Pin
17	3	316112CP	Cotter Pin

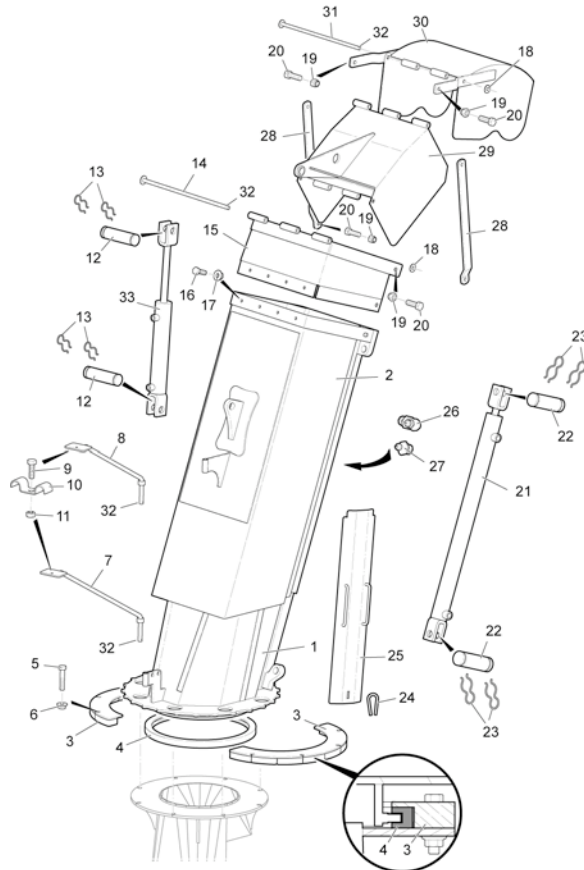
Two Stage Deflector - Option



Item	QTY	Part Number	Description
1	1	SCA	Straight Chute
2	1	TSHDB	Hood
3	2	TSHDC	Hood Deflector Brace
4	1	TSHDD	TSHDE
5	1	SCB	Single Deflector Rod
6	1	TSHDE	2 stage Deflector Rod
7	4	12112	Hex Bolt
8	2	12FW	Plain Washer
9	4	12CLN	Lock Nut
10	1	1x1UHMW54LG	UHMW ring
11	2	SCC	Clamping Ring

Item	QTY	Part Number	Description
12	1	20TL08	2x8 cyl
13	1	SCD	Hose Rod
14	1	C-1038	Hose Clip
15	1	637855	Pin
16	1	367855	1 inch Cylinder Clevis Pin
17	4	637856	Hair Pin
18	1	5161	Hex Bolt
19	1	516N	Hex Nut
20	8	12212	Hex Bolt
21	8	12FSLN	Flange Nut
22	3	316112CP	Cotter Pin

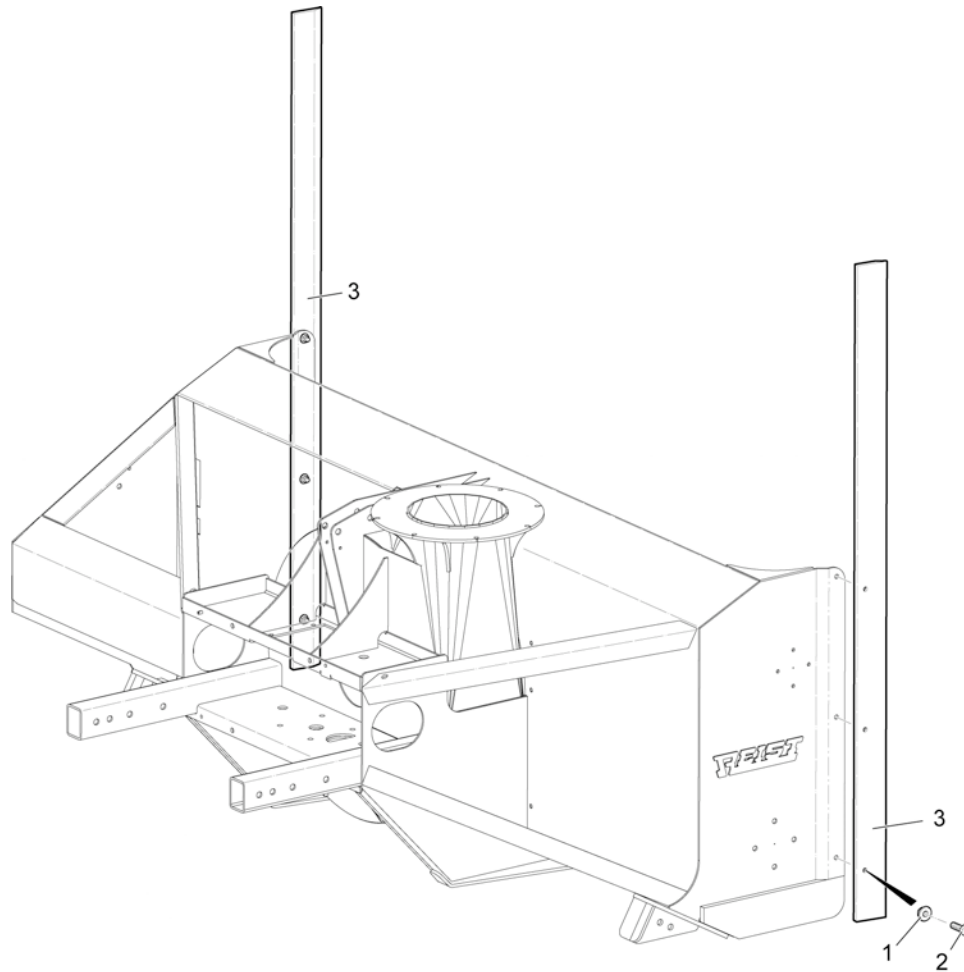
Telescopic Chute - Option



Item	QTY	Part Number	Description
1	1	TC13	Extension Hood Base Weldment
2	1	TC12	Extension Hood Slider Weldment
3	2	SCC	Clamping Ring
4	1	1x1UHMW54LG	UHMW ring
5	1	TC09	Hose Rod
6	1	TC10	Top Hose Rod
7	2	141	Hex Bolt
8	2	C-1038	Hose Clip
9	2	14N	Hex Nut
10	2	100x262	Pin
11	4	637856	Hair Pin
12	1	TC05	Single Deflector Rod
13	1	TC01	Square Hood Deflector Mount
14	6	38*1	Hex Bolt
15	6	38FSLN	Flange Nut
16	1	TC13	Extension Hood Base Weldment
17	1	TC12	Extension Hood Slider Weldment

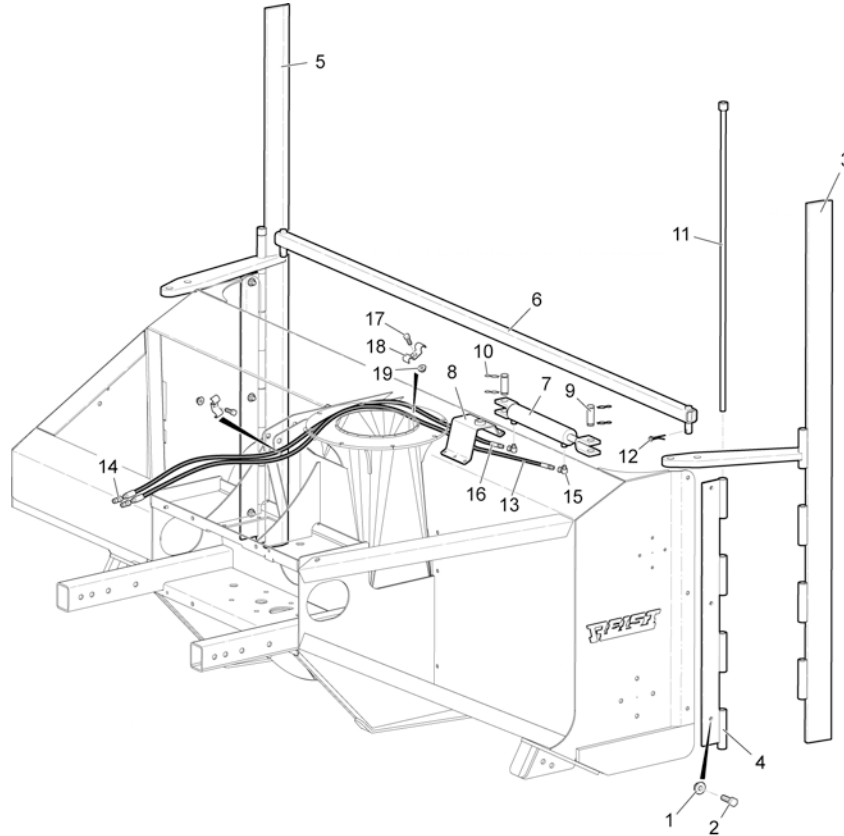
Item	QTY	Part Number	Description
18	2	12FW	Plain Washer
19	4	12CLN	Lock Nut
20	4	12112	Hex Bolt
21	2	20FEM28-10	2x28 clevis cylinder
22	4	100x225	Pin
23	8	637856	Hair Pin
24	1	TC15	Lock Pin
25	1	TC14	Hood Inner Door
26	4	Grease Zerk	1/8 NPT 90deg Zerk
27	4	Grease Zerk	1/8 NPT ST Zerk
28	2	TC03	Hood Deflector Brace
29	1	TC02	Hood
30	1	TC04	TOP HOOD
31	1	TC06	Deflector Rod 2
32	4	316112CP	Cotter Pin
33	1	20TL08	Cylinder

Bolt-on Bank Cutter - Option



Item	QTY	Part Number	Description
1	6	12FSLN	Hex Nut
2	6	12112	Hex Bolt
3	2	4025	Bank Cutter

Hydraulic Bank Cutter – Option



Item	QTY	Part Number	Description
1	6	12FSLN	Flange Nut
2	6	12112	Hex Bolt
3	1	4026	Side Cutter - Right
4	2	4027	Bank Cutter Mount
5	1	4028	Side Cutter - Left
6	1	4029	Bank Cutter Tie Rod
7	1	20FEM10-10	Clevis Cylinder 2
8	1	4030	Bank Cutter Cylinder Bracket
9	2	100x225	Pin
10	4	637856	Hair Pin

Item	QTY	Part Number	Description
11	2	4031	Rod
12	2	382CP	Cotter Pin
13	1	H24504-108-106-112	Retract Hose
14	2	8010-4	1/2 Male Tip
15	2	9405*6*6	Swivel Elbow
16	1	H24504-108-106-102	Extend Hose
17	2	38*1	Hex Bolt
18	2	C-1038	Hose Clip
19	2	38FSLN	Flange Nut

WARRANTY INFORMATION

All new REIST machinery is warranted to be free from defects in material or workmanship, which may cause failure under normal usage and service when used for the purpose intended for a period of 12 months. This warranty applies only to a new REIST product, there being no warranty of any nature in respect to new products that have been modified or altered, repaired, neglected, or used in any way, which, in the opinion of REIST adversely affects its performance.

In the event of failure of a part or parts, and upon inspection, REIST is satisfied that failure is due to defective material or workmanship within 12 calendar months from the date of delivery to an end user, such defective part or parts will be repaired or replaced by REIST Industries Inc. It is the responsibility of the buyer, at his expense, to transport the machine or equipment to the manufacturer service shop or to an authorized service depot or, alternatively, to reimburse REIST for any travel or transportation expense involved in fulfilling this warranty.

When requested by REIST, part or parts shall be returned for inspection, transportation prepaid, to a place designated by REIST. IN NO EVENT SHALL THE BUYER BE ENTITLED TO RECOVER FOR INCIDENTAL OR CONSEQUENTIAL DAMAGES, INCLUDING, BUT NOT LIMITED TO, LOSS OF PRODUCT, INCONVENIENCE, RENTAL OR REPLACEMENT EQUIPMENT, LOSS OF PROFIT, OR OTHER COMMERCIAL LOSS.

This warranty becomes void and null if the equipment is modified, breaks down as the result of an accident, is not operated according to manufacturer's recommendations, damaged by negligence or if maintenance has not been carried out as specified.

THIS WARRANTY IS NOT TRANSFERABLE

Proof of Purchase – Retain for your records

Date of Purchase (yyyy/mm/dd)		Model	Serial #	
Dealer Purchased From		City	State or Province	Country
First Name		Last Name	Phone Number (include area code)	
Address			State or Province	Country
City	Postal Code	Return to: REIST Industries Inc. 100 Union St., Elmira, Ontario, Canada N3B 2Z2 (519) 669-1501		

Remove bottom section and return to REIST Industries within 30 days of purchase



Proof of Purchase

Date of Purchase (yyyy/mm/dd)		Model	Serial #	
Dealer Purchased From		City	State or Province	Country
First Name		Last Name	Phone Number (include area code)	
Address			State or Province	Country
City	Postal Code	Return to: REIST Industries Inc. 100 Union St., Elmira, Ontario, Canada N3B 2Z2 (519) 669-1501		

REIST Industries Inc.
100 Union Street
Elmira, Ontario, Canada
N3B 2Z2

